

BLACKMER PARTS LIST

PUMP MODELS: C1-I, C2-I

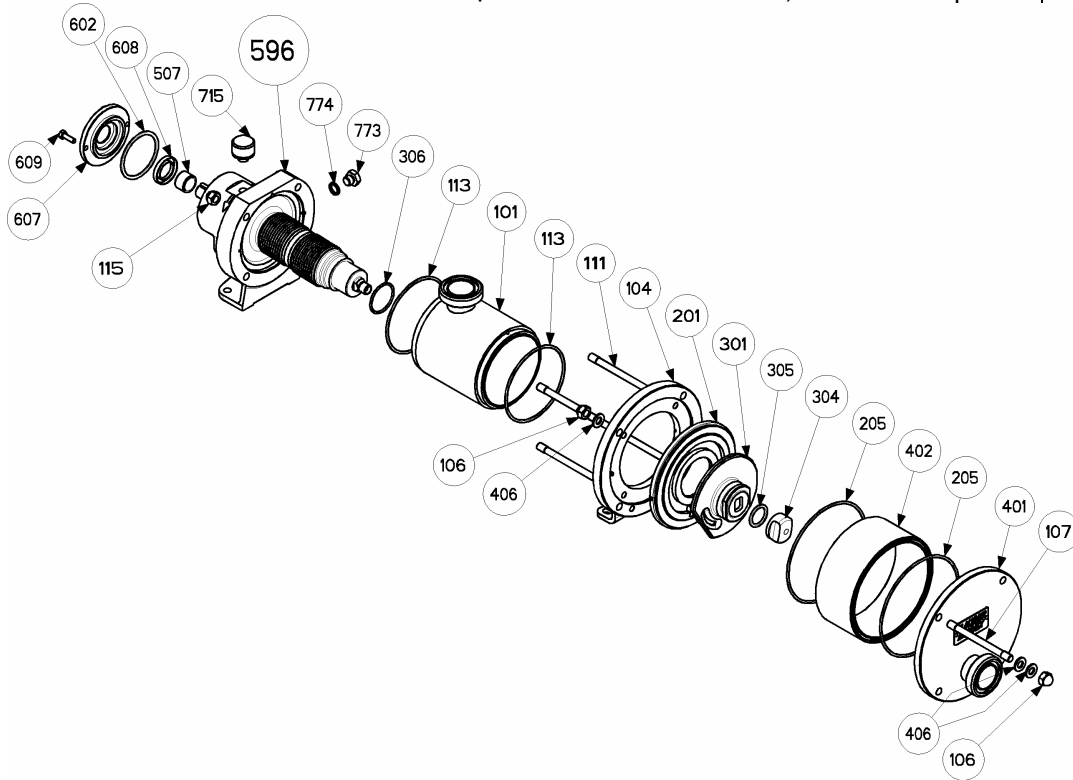
PUMP & TRANSMISSION

(See Instructions 1001-B00 for Installation, Operation and Maintenance)

967004
Page 1 of 1

PARTS LIST
1001-B01

Section	1001
Effective	Sept 2006
Replaces	June 2005



Kit No.	Ref. No.	Description	Parts per Pump	Part No.	Kit No.	Ref. No.	Description	Parts per Pump	Part No.		
100		Inlet Tube with ANSI Flanges	1	Y311969	400		Cover Plate with ANSI Flanges	1	Y311991		
		Inlet Tube with Clamp Flanges		Y311964			Cover Plate with SMS Flanges		Y311932		
		Inlet Tube with SMS Flanges		Y311924			Cover Plate with Clamp Flanges		Y311998		
		Inlet Tube with Cherry Burrel Flanges		Y311959			Cover Plate with Cherry Burrel Flanges		Y312016		
		Inlet Tube & ANSI Flanges & Heat Jackets		Y311986			401*		Cover Plate with Flange	(1)	
		Inlet Tube & Clamp Flanges & Heat Jackets		Y311980			402*		Spacer	(1)	
		Inlet Tube & SMS Flanges & Heat Jackets		Y311971		008	Transmission Plug Kit – consists of:				
		Inlet Tube & Cherry Burrel Flanges & Heat Jackets		Y311976			715*	Filler Plug	(1)	Y311441	
		101*	Inlet Tube	(1)			773*	Drain Plug	(1)		
		104*	Inlet Tube Flange	(1)			774*	Plug Washer	(1)		
119		C1-I Stud & Hex Head Nut Kit - consists of:	1	Y311939	206		Pump Seal Kit- FKM (std) – consists of:	1	Y311931		
		C2-I Stud & Hex Head Nut Kit - consists of:		Y311937			Pump Seal Kit –PTFE Encaps. – consists of:		Y312011		
		106*	Hex Head Nut	(8)			Pump Seal Kit-FDA FKM – consists of:		Y312012		
		107*	Cover Plate Stud	(4)			205*	Seal Ring	(2)		
		111*	Inlet Tube Stud	(4)			113*	Seal Ring	(2)		
		115*	Hex Head Nut	(4)			306*	Seal Ring	(1)		
		406*	Washers (C1-I ONLY)	(12)			305*	Seal Ring	(1)		
200		C1-I Cylinder & Disc Assembly – consists of:	1	Y311940	009		Transmission Seal Kit – consists of:	1	Y312368		
		C2-I Cylinder & Disc Assembly – consists of:		Y313391			602*		Seal Ring	(1)	
		201*	Cylinder	(1)			507*		Bushing	(1)	
	301*	Disc	(1)			608*	Lip Seal		(1)		
304		Disc Nut	1	Y218672			609*		Screws	(3)	
596		Complete Transmission Assembly – Non Jacketed	1	Y311933							
		– Jacketed		Y312305							

Keep this parts list with Installation, Operation and Maintenance Instructions 1001-B00.

* () Parts included in Kit



1809 Century Avenue, Grand Rapids, Michigan 49509-1595, U.S.A.
Telephone: (616) 241-1611 / Fax: (616) 241-3752
E-Mail: blackmer@blackmer.com / Internet: www.blackmer.com