

BLACKMER PARTS LIST

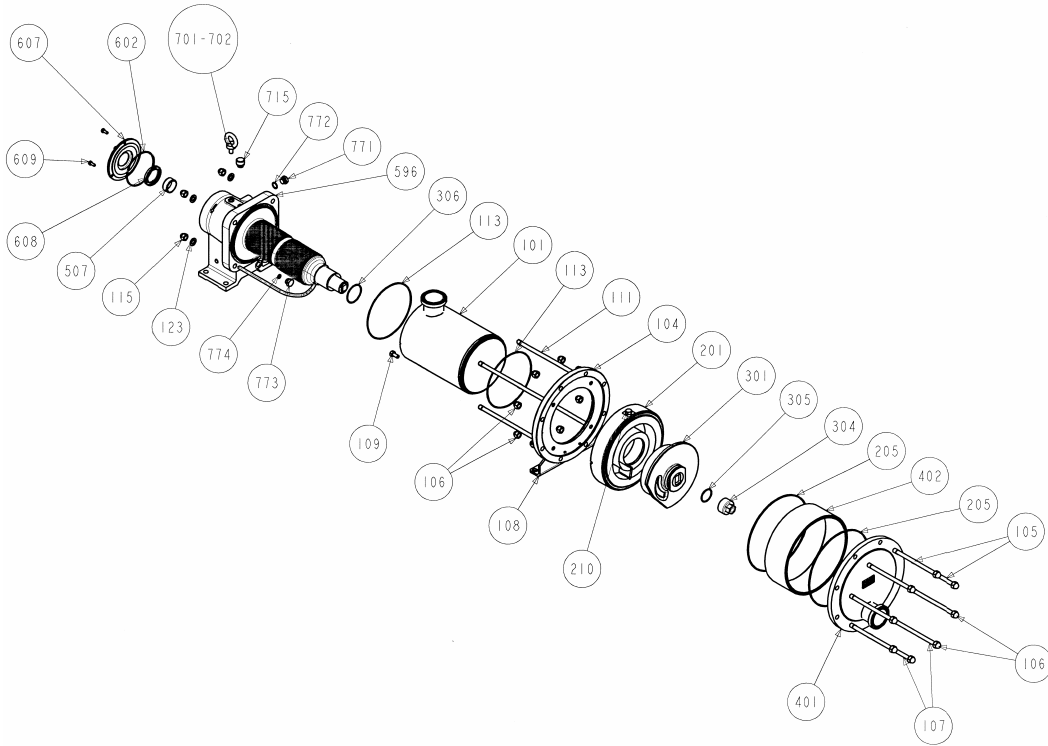
PUMP MODELS: C24-I, C36-I

PUMP & TRANSMISSION

(See Instructions 1001-C00 for Installation, Operation and Maintenance)

967009 **PARTS LIST**
Page 1 of 1 **1001-C01**

| | |
|-----------|-----------|
| Section | 1001 |
| Effective | Sept 2006 |
| Replaces | May 2005 |



| Kit No. | Ref. No. | Description | Parts per Pump | Part No. | Kit No. | Ref. No. | Description | Parts per Pump | Part No. | | |
|---------|-------------------|--|----------------|----------|-------------|----------|--|--|-------------------|-------------------------|-----|
| 100 | | Inlet Tube with ANSI Flanges – consists of: | 1 | Y312230 | 596 | | Complete Transmission Assembly | 1 | Y312699 | | |
| | | Inlet Tube with Clamp Flanges – consists of: | | Y312234 | | 400 | | Cover Plate with ANSI Flanges | 1 | Y312255 | |
| | | Inlet Tube with SMS Flanges – consists of: | | Y312228 | | | | Cover Plate with SMS Flanges | | Y312247 | |
| | | Inlet Tube with Cherry Burrel Flanges – consists of: | | Y312232 | | | | Cover Plate with Clamp Flanges | | Y312251 | |
| | | Inlet Tube & ANSI Flanges & Heat Jackets | | CF | | | | Cover Plate with Cherry Burrel Flanges | | Y312249 | |
| | | Inlet Tube & Clamp Flanges & Heat Jackets | | CF | | | | 401* | | Cover Plate with Flange | (1) |
| | | Inlet Tube & SMS Flanges & Heat Jackets | | CF | | | 402* | Spacer | (1) | | |
| | | Inlet Tube & Cherry Burrel Flanges & Heat Jackets | | CF | | | 008 | Transmission Plug Kit – consists of: | | | |
| | | 101* Inlet Tube | | (1) | | | | 701* | Lifting eye bolts | (1) | |
| | | 104* Inlet Tube Flange | | (1) | | | | 702* | Plug Washer | (1) | |
| | 108* Foot Bracket | (1) | | 715* | Filler Plug | (1) | | | | | |
| | 109* Screw | (2) | | 773* | Drain Plug | (1) | | | | | |
| 119 | | C24-I Stud & Hex Head Nut Kit - consists of: | 1 | Y312184 | 206 | | Pump Seal Kit- FKM (std) – consists of: | 1 | Y312246 | | |
| | | C36-I Stud & Hex Head Nut Kit - consists of: | | Y312260 | | | Pump Seal Kit -PTFE Encaps. – consists of: | | Y312190 | | |
| | | 105* Cover Plate Stud | (6) | | | | Pump Seal Kit-FDA FKM – consists of: | | CF | | |
| | | 106* Hex Head Nut | (16) | | | | 205* | Seal Ring | (2) | | |
| | | 107* Cover Plate & Foot Bracket Stud | (2) | | | | 113* | Seal Ring | (2) | | |
| | | 111* Inlet Tube Stud | (4) | | | | 306* | Seal Ring | (1) | | |
| | | 115* Hex Head Nut | (4) | | | | 305* | Seal Ring | (1) | | |
| 200 | | C24-I Cylinder & Disc Assembly – consists of: | 1 | Y312188 | 009 | | Transmission Seal Kit – consists of: | 1 | Y312372 | | |
| | | C36-I Cylinder & Disc Assembly – consists of: | | Y312261 | | | 602* | Seal Ring | (1) | | |
| | | 201* Cylinder | (1) | | | | 507* | Bushing | (1) | | |
| 304 | | 301* Disc | (1) | | | 608* | Lip Seal | (1) | | | |
| | | Disc Nut – C24-I | 1 | Y219426 | | 609* | Screws | (3) | | | |
| | – C36-I | | Y219455 | | | | | | | | |

Keep this parts list with Installation, Operation and Maintenance Instructions.
* () Parts included in Kit CF - Consult Factory



1809 Century Avenue, Grand Rapids, Michigan 49503-1530, U.S.A.
Telephone: (616) 241-1611 / Fax: (616) 241-3752
E-Mail: blackmer@blackmer.com / Internet: www.blackmer.com