

BLACKMER PARTS LIST

PUMP MODELS: C4-A, C8-A

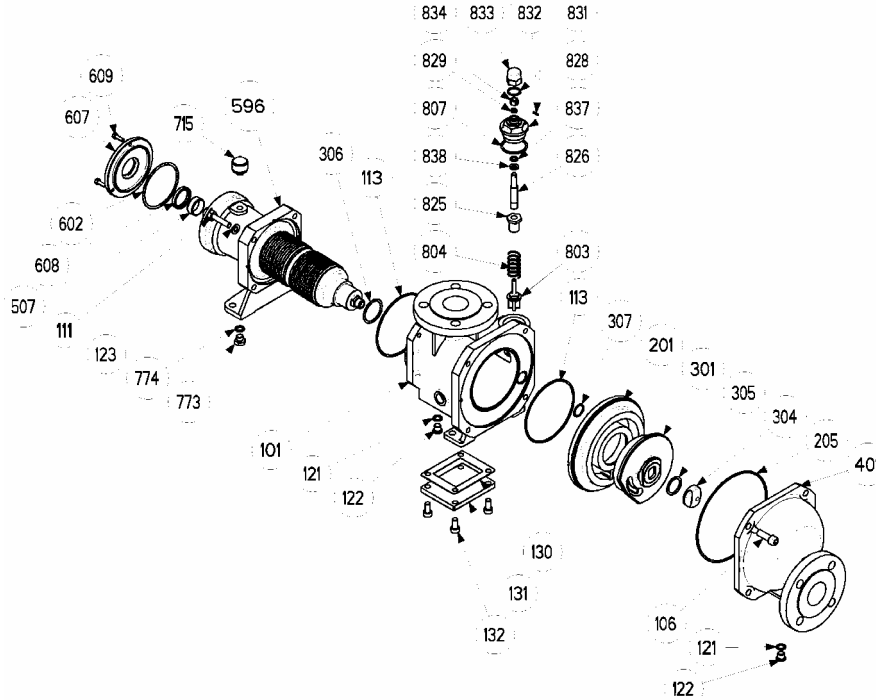
PUMP & TRANSMISSION

(See Instructions 1001-E00 for Installation, Operation and Maintenance)

967006
Page 1 of 1

PARTS LIST
1001-E01

Section	1001
Effective	July 2005
Replaces	February 2001



Kit No.	Ref. No.	Description	Parts per Pump	Part No.	Kit No.	Ref. No.	Description	Parts per Pump	Part No.	
100		Inlet Sleeve w/ ANSI Compatible 150# Flange	1	Y311356	820		Bypass Assembly without Spring	1	Y311366	
		Inlet Sleeve w/ ANSI Flange & Heat Jacket		Y311360			803*	Valve	(1)	
		101* Inlet Sleeve	(1)				807*	Seal Ring	(1)	
		130* Jacket Cover Plate Gasket	(1)				825*	Spring Support	(1)	
		131* Heat Jacket Cover Plate	(1)				826*	Adjusting Screw	(1)	
		132* Capscrews-Heat Jacket Cover Plate	(4)				828*	R/V Cover	(1)	
119		C4-A & C8-A Bolt Kit	1	Y311508			829*	Spring	(1)	
		C4-A & C8-A w/ Heat Jacket Bolt Kit		Y311509			831*	Pin	(1)	
		106 Hex Socket Bolts	(6)				832*	Flat Seal	(1)	
		111* Inlet Sleeve Stud	(4)				833*	Cap	(1)	
		123* Washer	(4)				834*	Adjusting Nut	(1)	
		132* Screw (With Heat Jacket Only)	(4)				837*	Seal Ring	(1)	
200		C4-A Cylinder & Disc Assembly	1	Y313393			838*	Washer	(1)	
		C8-A Cylinder & Disc Assembly		Y312061		206		Pump Seal Kit- FKM (std)	1	Y311358
		201 Cylinder	(1)					Pump Seal Kit-PTFE Encaps.		Y311908
		301* Disc	(1)					Pump Seal Kit- FKM - Heat Jacket Pump		Y311361
	304* Disc Nut	(1)					Pump Seal Kit-PTFE Encaps.- Heat Jacket Pump	Y311910		
596		Complete Transmission Assembly	1	Y311744				113*	Seal Ring	(2)
401		Cover Plate w/ ANSI Compatible 150# Flange	1	Y216354			130*	Jacket Cover Plate Gasket	(1)	
009		Transmission Seal Kit:	1	Y311343			205*	Seal Ring	(1)	
		507 Bushing	(1)				305*	Seal Ring	(1)	
		602* Seal Ring	(1)				306*	Seal Ring	(2)	
		608* Lip Seal	(1)				307*	Seal Ring	(1)	
		609* Screws	(3)				807*	Seal Ring	(1)	
008		Transmission Plug Kit	1	Y311441			832*	Flat Seal	(1)	
		715 Filler Plug	(1)			837*	Seal Ring	(1)		
		773* Drain Plug	(1)		804		Relief Valve Spring			
		774* Plug Washer	(1)				.8 - 2.5 Bars (12 - 36 psi)		Y201181	
140		Pump Drain Plug Set	1	Y311510			2 - 6.5 Bars (29 - 94 psi)		Y201182	
		121 Metallic Seal Ring	(2)				5 - 8 Bars (72 - 116 psi)		Y311488	
		122 Plug	(2)			3 - 5 Bars (43 - 72 psi)		Y201183		

Keep this parts list with Installation, Operation and Maintenance Instructions.

* () Parts included in Kit



1809 Century Avenue, Grand Rapids, Michigan 49509-1595, U.S.A.
Telephone: (616) 241-1611 / Fax: (616) 241-3752
E-Mail: blackmer@blackmer.com / Internet: www.blackmer.com