

BLACKMER PARTS LIST

966911

PARTS LIST

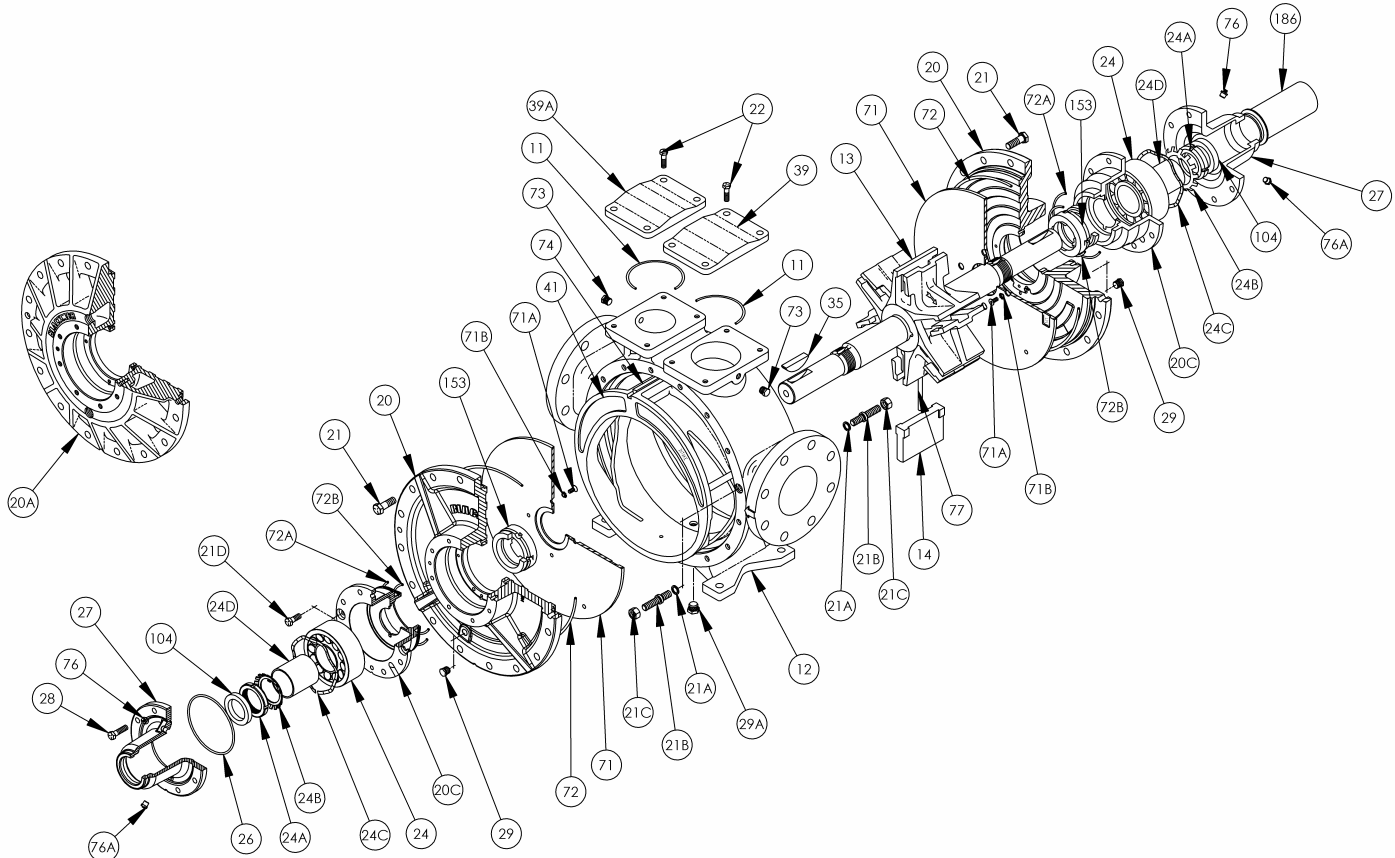
Page 1 of 2

106-A01

PUMP MODELS: MLX4B, MLXW4B, MRLX4B, MRLXW4B

See Instructions 106-A00 for Installation, Operation and Maintenance

Section 106
Effective Sept 2007
Replaces Dec 2005

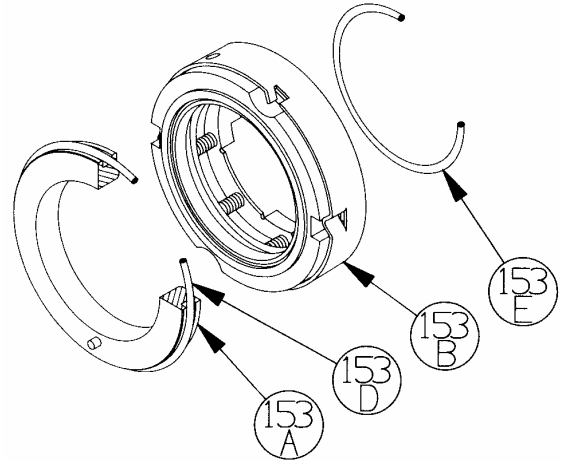


Ref. No.	Part Name	Parts Per Pump	Part No.	Ref. No.	Part Name	Parts Per Pump	Part No.
11	O-Ring – Blanking Plate/Valve(FKM)(std)	2	² 701991	29A	Drain Plug – Casing	1	908207
	O-Ring – Blanking Plate/Valve (PTFE)		702066	35	Key – Shaft	1	² 909136
12	Casing – Flat Face Flanges	1	016900	39	Blanking Plate (Inlet)	1	496900
13	Rotor & Shaft (Includes Ref. 24A & 24B)	1	³ 266905	39A	Blanking Plate (Discharge)	1	496901
14	Vane – Maxvane (Std.)	6	² 096200	41	Liner (MLX4B)	1	³ 186915
	Vane – EC Laminate		096961		Liner – Hardened (MLXW4B)		186916
	Vane – EC Bronze		096967		Liner – Lower Displacement (MRLX4B)		186917
	Vane – EC Hardened Ductile Iron		096965		Liner – Lower Displ., Hardened (MRLXW4B)		186918
20	Head (Std.)	2	036939	71	Disc (MLX4B, MRLX4B)	2	³ 066902
20A	Jacketed Head	2	036919		Disc – Hardened (MRLXW4B)		066903
20C	Hub	2	036952	71A	Machine Screw – Disc	8	920007
21	Capscrews – Head	28	920510	71B	Lockwasher – Disc	8	909622
21A	Gasket – Head Stud	4	701981	72	O-Ring – Head (FKM) (Std)	2	² 702058
21B	Stud – Head	4	921569		O-Ring – Head (PTFE)		702069
21C	Nut – Head Stud	4	922850	72A	O-Ring (Large) – Hub (FKM) (Std)	2	² 702059
21D	Capscrews – Hub	4	920128		O-Ring (Large) – Hub (PTFE)		702068
22	Capscrews – Blanking Plate/Valve	8	920457	72B	O-Ring (Small) – Hub (FKM) (Std)	2	² 702060
24	Roller Bearing	2	² 903252		O-Ring (Small) – Hub (PTFE)		702065
24A	Locknut – Bearing	2	903543	73	Gage Plug	2	908198
24B	Lockwasher – Bearing	2	² 903544	74	Key – Liner	1	³ 186902
24C	Wave Spring – Bearing	2	903546	76	Grease Fitting	2	317815
24D	Spacer – Bearing	2	² 903547	76A	Grease Relief Fitting	2	701992
26	O-Ring – Bearing Cover (FKM)(Std)	2	² 702062	77	Push Rod (MLX4B)	3	² 126901
	O-Ring – Bearing Cover (PTFE)		702067		Push Rod (Lower Displ.) (MRLX4B, MRLXW4B)		126902
27	Bearing Cover	2	046900	104	Grease Seal	2	² 331907
28	Capscrews – Bearing Cover & Hub	16	920369	186	Shaft Protector	1	346902
29	Drain Plug – Head	2-3	908198	—	Kit Maintenance – MLX4B only	—	898982
				—	Kit Rebuild – MLX4B only	—	899082

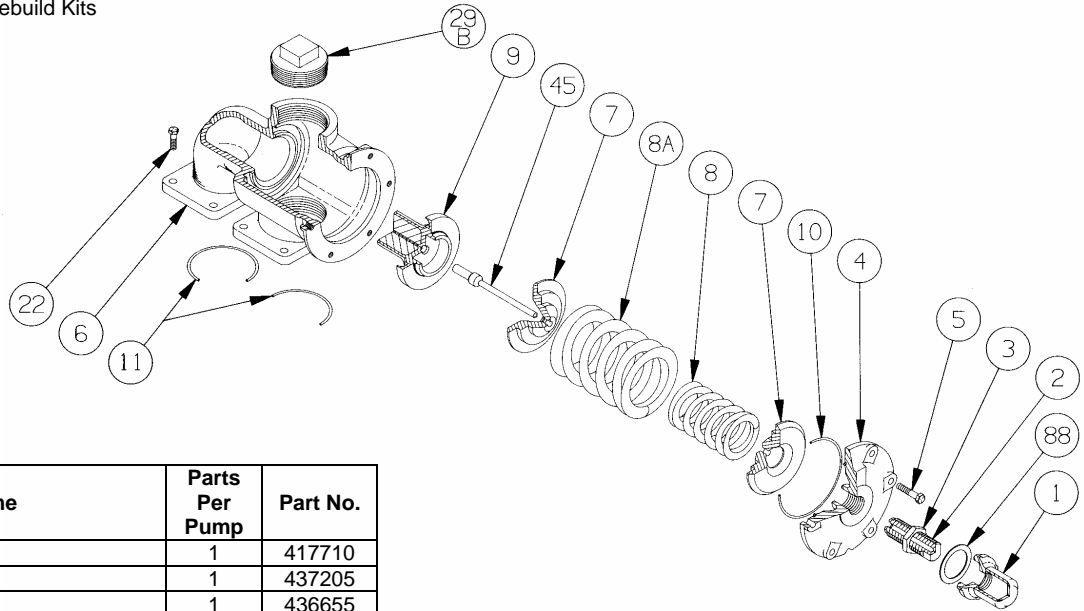
² Included in Maintenance and Rebuild Kits. ³ Included in Rebuild Kit. EC = Extra Clearance
When ordering parts, include the pump Serial Number, I.D. Number, and Model Designation.

MECHANICAL SEALS

REF. NO.	PART NAME	PARTS PER PUMP	PART NO.
MECHANICAL SEAL – STANDARD (SVCV)			
153	Mechanical Seal Assembly	2	² 337008
153A	Stationary Seat (Hardened Steel)	2	336992
153B	Rotating Assembly - with Carbon Seal Face	2	337000
153D	O-Ring – Stationary (FKM)	2	701921
153E	O-Ring - Rotating (FKM)	2	701967
MECHANICAL SEAL – OPTIONAL (SVBV)			
153	Mechanical Seal Assembly	2	337011
153A	Stationary Seat (Hardened Steel)	2	336992
153B	Rotating Assembly with Bronze Seal Face	2	337001
153D	O-Ring – Stationary (FKM)	2	701921
153E	O-Ring - Rotating (FKM)	2	701967
MECHANICAL SEAL – OPTIONAL (LVLV)			
153	Mechanical Seal Assembly	2	337014
153A	Stationary Seat (Silicon Carbide)	2	336995
153B	Rotating Asy with Silicon Carbide Seal Face	2	337002
153D	O-Ring – Stationary (FKM)	2	701921
153E	O-Ring – Rotating (FKM)	2	701967



² Included in Maintenance and Rebuild Kits



OPTIONAL RELIEF VALVE

Ref. No.	Part Name	Parts Per Pump	Part No.
1	Cap – Relief Valve (R/V)	1	417710
2	Adjusting Screw – R/V	1	437205
3	Jam Nut – R/V	1	436655
4	Cover – R/V	1	416900
5	Capscrew – R/V Cover	6	920351
6	Body – R/V	1	406900
7	Spring Guide – R/V	2	426900
8	Spring – R/V (45 – 75psi)	1	476900
8A	Spring – R/V (76 – 125psi)	1	476904
8	Springs – R/V (126 – 200psi)	1	476900
8A	Use springs nested together	1	476904
9	Valve – R/V	1	456315
10	O-Ring – R/V Cover (FKM)	1	702059
	O-Ring – R/V Cover (PTFE)		702068
11	O-Ring – Blanking Plate/Valve (FKM)	2	701991
	O-Ring – Blanking Plate/Valve (PTFE)		702066
22	Capscrews – Plate/Valve	8	920457
29B	Bypass Plug (3" NPT)	1	908226
45	Spring Guide Rod	1	426901
88	Gasket – R/V Cap	1	536652

INTERCHANGEABILITY WITH OBSOLETE MLX4

MLX4B	INTERCHANGEABILITY WITH MLX4
Rotor & Shaft	Interchangeable but requires new vanes.
Liner	Interchangeable but requires new push rods.
Vanes	Interchangeable
Push Rods	Interchangeable but requires new liner (consult factory).
Heads	Interchangeable
Discs	Interchangeable



1809 Century Avenue, Grand Rapids, Michigan 49503-1530, U.S.A.
 Telephone: (616) 241-1611 / Fax: (616) 241-3752
 E-Mail: blackmer@blackmer.com / Internet: www.blackmer.com

Parts List 106-A01
 Page 2 of 2